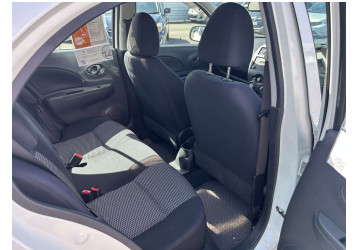
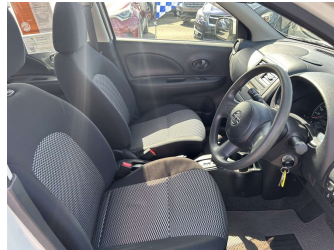


2016 Nissan March S



Purchase Price

\$10,995

Includes GST, Registration & Licensing

Finance may be available on this vehicle. Ask one of our friendly staff for more information.



Gain peace of mind with Mechanical Breakdown Insurance. **Ask us how.**



Top features

- » Air Bag(s)
- » Air Conditioning
- » Car Stereo
- » Central Locking
- » Central Locking
- » Child seat anchor poin...
- » Electric Mirrors
- » Electric Mirrors
- » Electric Mirrors (Retr...
- » Electric Windows
- » Power Steering
- » Rear Wiper
- » Remote Locking
- » Traction Control

Body Style

5 door, Hatchback

Odometer

60,498 km

Engine

1200 cc

Fuel Type

Petrol

Transmission

Auto, Front Wheel

Wheels

-

VIN

7AT0DH0KX26066324

Interior

Black, Cloth

Safety



Based on 2025 VSRR rating

Reg No.

-

Ext Colour

White

History

-

Seats

5 seats, Cloth

CO2 Emissions

★★★★☆

129 grams/km

Energy Economy

★★★★☆☆

Annual fuel cost of \$2,200
5.6L per 100km

Cost per year is an estimate based on petrol price of \$2.80 per litre and an average distance of 14000 km. Emissions and Energy Economy figures standardised to 3P WLTP.

Stock ID: 9039



Wanganui Car Centre | Phone 06 348 8066 | Email
info@wanganuicarcentre.com
422 Victoria Ave, Wanganui 4500, New Zealand
www.wanganuicarcentre.com