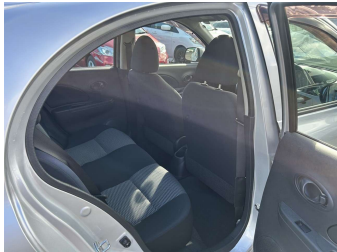
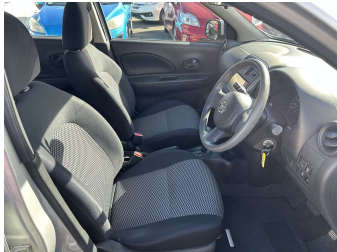


# 2015 Nissan March S



### Purchase Price

Includes GST, Registration & Licensing

**\$10,995**

Finance may be available on this vehicle. Ask one of our friendly staff for more information.



Gain peace of mind with Mechanical Breakdown Insurance. **Ask us how.**



ASSURANT®

### Top features

- » ABS Braking
- » Air Bag(s)
- » Air Conditioning
- » CD(s)
- » Central Locking
- » Central Locking
- » Child seat anchor poin...
- » Electric Mirrors
- » Electric Mirrors
- » Electric Mirrors (Retr...
- » Electric Windows
- » Power Steering
- » Rear Wiper
- » Remote Locking
- » Spot Lights
- » Traction Control

Body Style

**5 door, Hatchback**

Odometer

**37,042 km**

Engine

**1200 cc**

Fuel Type

**Petrol**

Transmission

**Auto, Front Wheel**

Wheels

-

VIN

**7AT0DH0KX25057551**

Interior

**Black, Cloth**

Safety



Based on 2024 VSRR rating

Reg No.

-

Ext Colour

**Silver**

History

-

Seats

**5 seats, Cloth**

CO2 Emissions

**★★★★☆**

**129 grams/km**

Energy Economy

**★★★★☆☆**

**Annual fuel cost of \$2,200**

**5.6L per 100km**

Cost per year is an estimate based on petrol price of \$2.80 per litre and an average distance of 14000 km. Emissions and Energy Economy figures standardised to 3P WLTP.

**Stock ID: 7979**



Wanganui Car Centre | Phone 06 348 8066 | Email  
info@wanganuicarcentre.com  
422 Victoria Ave, Wanganui 4500, New Zealand  
www.wanganuicarcentre.com